



Read this manual carefully before use, and retain it for future reference. The rice cooker is for household use only.

Precautions

Usage restrictions

- Keep the rice cooker away from children.
- The normal operating altitude range of the rice cooker is 0–2000 meters.
- Do not place the rice cooker on unstable or wet surfaces. Keep it away from fire or heat sources (such as stoves), preferably 30 cm or more.
- Do not place the rice cooker near devices that are susceptible to electromagnetic interference.
- Do not use a non-dedicated or deformed inner pot to prevent burns and injuries as a result of overheating.

Cleaning & maintenance

- Do not immerse the rice cooker in water or splash it with water.
- Do not use steel wool or other hard objects to clean or scrub the inner pot.
- Use only soft cloths for cleaning.

AC power cord

- Use only the supplied AC power cord.
- Unplug the power cord before repairing and moving the rice cooker.
- If the supply cord is damaged, it must be replaced by a special cord or assembly available from the manufacturer or its service agent.
- Do not bend, pull or twist the power cord, otherwise its core may be exposed or may break.
- Do not use the supplied power cord with any other device.

Precautions for using power supply

- Do not use any power supply other than 220–240 V AC to avoid fire and electric shock.
- Always unplug the rice cooker by holding the power plug. Do not pull the AC power cord to avoid electric shocks or short circuit fire.
- Do not allow children to use the rice cooker unsupervised, and keep it out of the reach of infants to prevent electric shock, burns, or other injuries.

- Do not plug or unplug the power cord with wet hands, so as to avoid electric shock or injuries.
- Only use a grounded electrical outlet with a rated current of 10 A or more to avoid the risk of fire and other potential hazards.

About the environment

- Steam and heat may damage, discolor or deform your walls and furniture, so keep the product preferably at least 30 cm away from any walls and furniture.
- When using the rice cooker in a kitchen cabinet, etc., please ensure that the place is well ventilated.

While in use

- Do not use the inner pot on any other heat sources, such as an induction rice cooker or gas stove.
- Do not place the inner pot and accessories in the dishwasher for cleaning.
- Do not insert anything into the steam outlet or gaps to avoid electric shocks or injuries.
- Do not touch the inner pot directly by hand during and immediately after use to avoid high-temperature burns.
- Do not touch the steam outlet during or immediately after use. Keep away from children and infants and take special precautions to prevent them from being scalded.
- Do not move or shake the rice cooker during use.
- Do not use this rice cooker to prepare food that may clog the steam valve (such as seaweed and kelp).
- Do not cover the steam valve of the rice cooker with other items when in use to avoid the inability of steam release.
- If rice is left in the rice cooker in the keep warm mode for more than 12 hours, it will have a peculiar smell.
- This appliance is not intended for use by persons (including children) with reduced physical, sensory or mental capabilities, or lack of experience and knowledge, unless they have been given supervision or instruction concerning use of the appliance by a person responsible for their safety for IEC60335.
- Children should be supervised to ensure that they do not play with the appliance for IEC60335.

- This appliance can be used by children aged from 8 years and above if they have been given supervision or instruction concerning use of the appliance in a safe way and if they understand the hazards involved. Cleaning and user maintenance shall not be made by children unless they are older than 8 and supervised. Keep the appliance and its cord out of reach of children aged less than 8 years for EN 60335.
- Appliances can be used by persons with reduced physical sensory or mental capabilities of lack of experience and knowledge if they have been given supervision or instruction concerning use of the appliance in a safe way and understand the hazards involved for EN 60335.
- Children shall not play with the appliance for EN 60335.

After use

- After use, always remember to turn off the rice cooker and unplug the power cord.
- Regularly check the steam outlet to make sure it is not clogged.
- Immediately stop using and unplug this product if there is any error or it malfunctions. Remove the inner pot only when it has cooled off.

Additional precautions

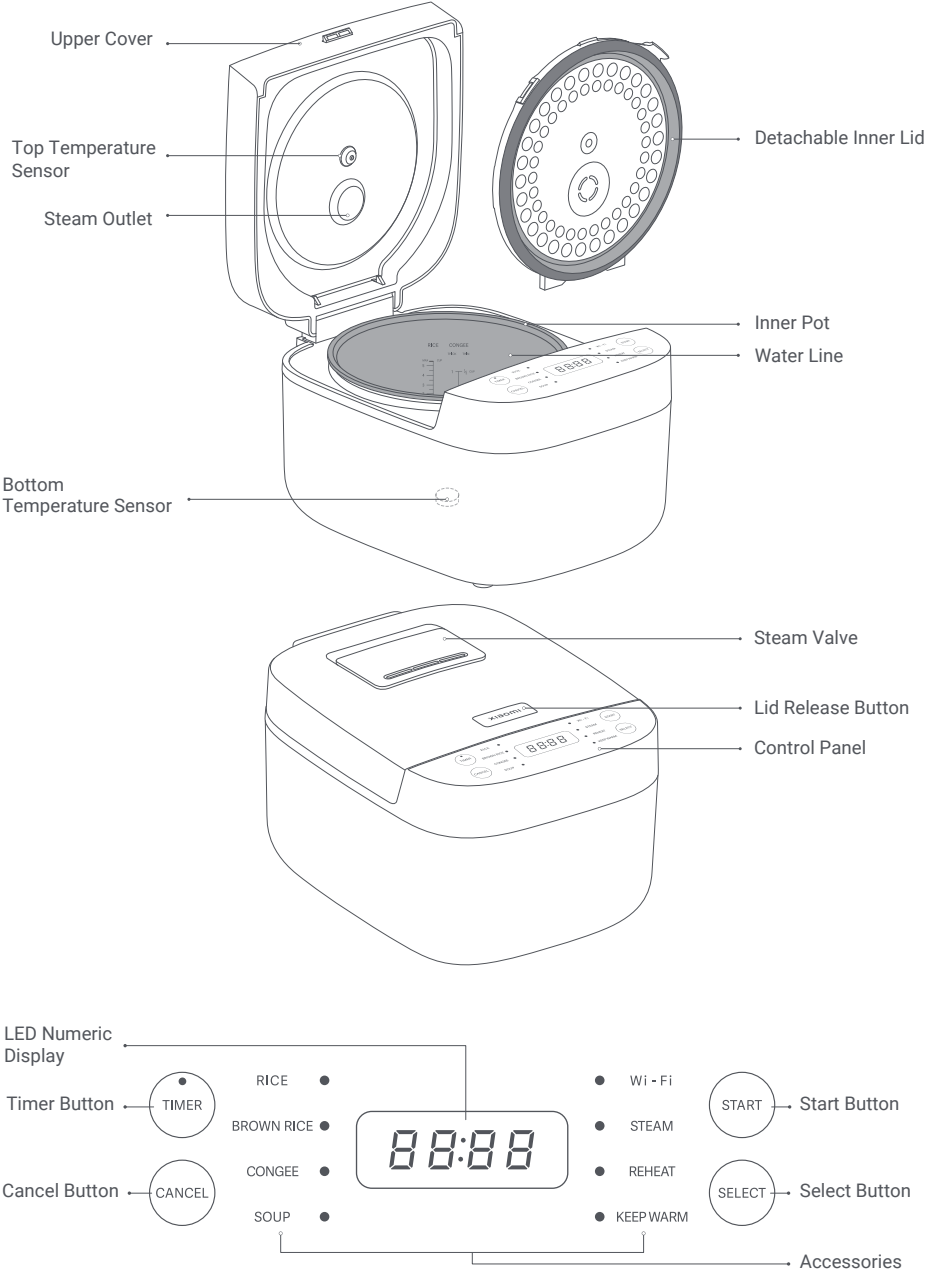
- Do not drop the rice cooker or hit it with hard objects to prevent injuries or malfunction.
- Do not use the rice cooker when the inner set is damaged to avoid scalds or injuries caused by steam or boiling object leaks.
- Do not modify the unit.
- Only a repair technician may disassemble or repair the product, in order to prevent the risk of fire, electric shocks, and injuries.
- Immediately stop using this product if there is any error or malfunctions to prevent fire, electric shocks or other injuries.
- Avoid the silicone parts of the product getting contact with alcoholic beverages with an alcohol content greater than 50%.

CAUTION: The surface of the heating elements will have residual heat after use.

CAUTION: Incorrect usage of the rice cooker may result in injuries.

CAUTION: Do not splash liquid onto the connector.

Product Overview



Illustrations of product, accessories, and user interface in the user manual are for reference purposes only. Actual product and functions may vary due to product enhancements.

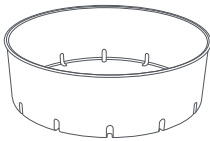
Accessories



Rice Paddle



Ladle



Steamer Basket



Measuring Cup



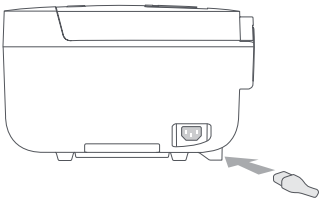
Power Cord

How to Use

1. Connect to power supply

Plug the power cord into the connector at the side rear of the rice cooker, and the other end of the power cord into an AC outlet.

Note: The rice cooker will automatically enter standby mode if no operation is performed within 5 minutes. Press any button to awaken for use from the standby mode.



2. Connecting with Mi Home/Xiaomi Home App

This product works with the Mi Home/Xiaomi Home app*. Use the Mi Home/Xiaomi Home app to control your device, and to interact with other smart home devices.

Scan the QR code to download and install the app. You will be directed to the connection setup page if the app is installed already. Or search "Mi Home/Xiaomi Home" in the app store to download and install it. Open Mi Home/Xiaomi Home app, tap "+" on the upper right, and then follow prompts to add your device.



1DD82735

* The app is referred to as Xiaomi Home app in Europe (except for Russia). The name of the app displayed on your device should be taken as the default.

Note: The version of the app might have been updated, please follow the instructions based on the current app version.

3. Turn on or off Wi-Fi

Turn off Wi-Fi: Press and hold the cancel and select buttons for 3 seconds, then release. When the indicator turns from blinking orange to off, the Wi-Fi is turned off.

Turn on Wi-Fi: In Wi-Fi off state, press and hold the cancel and select buttons for 3 seconds. When the indicator turns from off to blinking orange, the Wi-Fi enters a waiting-for-connection status.

4. Reset Wi-Fi

In the standby mode, press and hold the cancel and select buttons for 7 seconds. When you hear a notification sound, Wi-Fi will be reset and the rice cooker will enter a waiting for connection status.

5. Wi-Fi status

Operating Modes	Status Display
Awaiting connection	Blinking orange
Connecting	Blinking blue
Connected	Keeping blue

Note: When not connected to Wi-Fi, the indicator will blink orange. If not connected for three minutes, the orange indicator will turn off.

Start Cooking

1. Open the lid

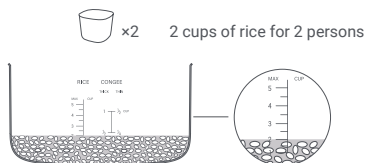
Press the lid release button to open the lid.

Note: When you need to remove the inner pot, gently push back the upper lid to fully open it. Avoid contact with the inner lid when removing the inner pot.



2. Add rice and water

Using 2 cups of rice as an example, add 2 measuring cups of rice into the pot, then add water up to the fourth measuring line. When adding water, do not exceed the measuring line for the corresponding number of cups of rice to prevent the rice cooker from overflowing or a possible short circuit.



3. Setting menu

Turn on the rice cooker and press the select button to navigate to different cooking modes, including rice, brown rice, and congee. For example, press the select button and navigate to the rice mode.

4. Start cooking

Press the start button to start the cooking mode.

WARNING: The rice mode is for rice cooking only. Cooking other food in this mode may cause scalds or impair the product performance.

Operating Instructions

Switch modes

Press the select button to navigate to a desired cooking mode. Each time you press the button, the cooking mode will be switched in sequence of rice, brown rice, congee, soup, steam, reheat, and keep warm.

1. Rice

The rice mode is the default cooking mode. You can press the start button to start cooking rice directly.

Note: The cooking time of the rice mode is 1 hour fixed.

2. Brown rice

Press the select button and navigate to the brown rice mode. Then, press the start button to start cooking.

Note: The cooking time of the brown rice mode is 1 hour and 45 minutes fixed.

3. Congee

Press the select button and navigate to the congee mode. Then, press the start button to start cooking.

Note: The default cooking time of the congee mode is 1 hour and 30 minutes. Go to the Mi Home/Xiaomi Home app to set the desired cooking time.

4. Soup

Press the select button and navigate to the soup mode. Then, press the start button to start cooking.

Note: The default cooking time of the soup mode is 1 hour and 30 minutes. Go to the Mi Home/Xiaomi Home app to set the desired cooking time.

5. Steam

Press the select button and navigate to the steam mode. Then, press the start button to start cooking.

Note: The default cooking time of the steam mode is 30 minutes. Go to the Mi Home/Xiaomi Home app to set the desired cooking time.

6. Reheat

Press the select button and navigate to the reheat mode. Then, press the start button to start cooking.

Note: The default cooking time of the reheat mode is 30 minutes. Go to the Mi Home/Xiaomi Home app to set the desired cooking time.

7. Keep warm

Once cooking is finished, the rice cooker automatically enters the keep warm mode. You can also manually select the keep warm mode.

Note: The default keep-warm time is 4 hours in rice or brown rice mode and 12 hours in other modes. The LED digital display will count the keep-warm time positively. After 12 hours, the rice cooker will automatically stop keeping warm and switch to the standby mode.

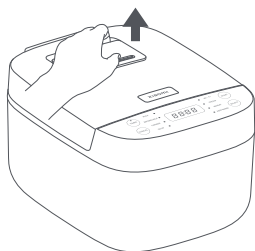
Schedule Mode

After selecting a cooking mode (e.g. rice), press the timer button to set the time from present to the completion of cooking. For example, if you intend to enjoy your meal in 10 hours, set the timer to show as 10: 00 (which means 10 hours 0 minutes).

Note: The time to set in timer ranges from 15 minutes to 24 hours excluding the cooking time. Each time you press the timer button, the time will increase by 15 minutes. If you press and hold the timer button, the time will increase quickly in a 30-minute unit. Press the start button to start scheduled cooking. Go to the Mi Home/Xiaomi Home app to set your desired time.

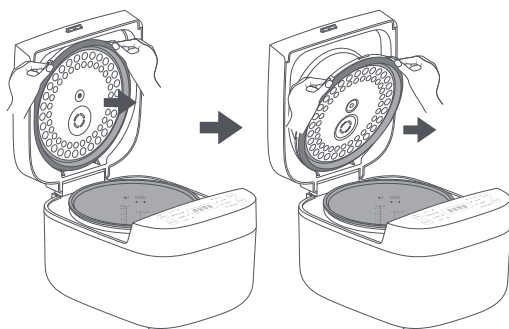
Care & Maintenance

1. Disassembling



- a. Gently dig out the steam valve and remove it.

Note: Clean the inner lid and steam valve after every use.



- c. Hold the inner lid with both hands and pull it outwards, then remove it.

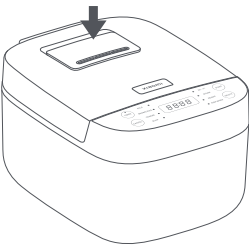


- b. Gently push out the inner cover of the steam valve (as shown in the figure), and remove it.

2. Assembling

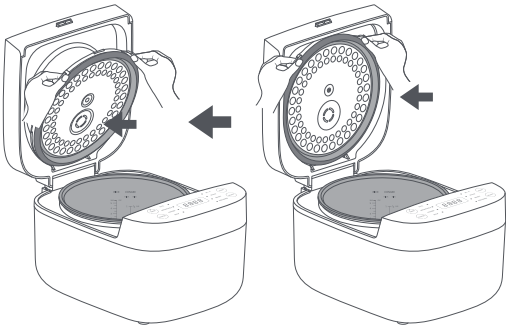


a. Align and push the inner cover onto the steam valve to assemble it.



b. Align the steam hole on the steam valve with the steam outlet and install the steam valve.

Note: The steam valve must be installed correctly, otherwise it may cause scalds or impair the product performance.



c. Align the inner lid to the latch and gently push the inner lid into it. When you hear a click sound, the buckle is locked firmly.

Note: The inner lid must be installed, otherwise the upper lid of the rice cooker cannot be closed.

Specifications

Name: Smart Multifunctional Rice Cooker	Model: MFB120A-1
Rated Voltage: 220~240 V~	Rated Frequency: 50~60 Hz
Rated Power: 595~710 W	Rated Capacity of Rice: 1 L
Material of Inner Pot: Aluminum alloy	Rated Capacity of Water: 3 L
Wi-Fi Maximum Output Power: < 20 dBm	Wi-Fi Operation Frequency: 2412~2472 MHz
BT Maximum Output Power: < 6.58 dBm	BT Transmission Frequency: 2402~2480 MHz
Wireless Connectivity: Wi-Fi IEEE 802.11b/g/n 2.4 GHz	Item Dimensions: 325 × 244 × 202 mm
Compatible with: Android 8.0 & iOS 12.0 or above	

Error Codes

Code	Error Description	Notes
E-09	The top sensor is damaged (including a short circuit and broken circuit).	Contact the after-sales service team.
E-10	The bottom sensor is damaged (including a short circuit and broken circuit).	Contact the after-sales service team.
E-11	Communication error.	Contact the after-sales service team.

Troubleshooting

Issues	Possible causes	Solutions
Unable to close the upper lid.	Check whether the inner lid is properly installed.	Install the inner lid correctly.
Rice is half-cooked (undercooked).	The ratio of rice and water may be not as required (less water). Rice may be not taken in a flat cup (excessive rice).	Follow the operating instructions given in the user manual.
Overflows while cooking rice or congee.	Misapply the cooking mode when cooking congee. Rice and water are not added in proportion (excessive water). There are foreign objects at the outer bottom of the inner pot.	Follow the operating instructions given in the user manual. Remove foreign objects.
There is an odor during cooking process.	There is residual food or accumulated water on the steam valve or inner lid. At first use, using the steam mode to boil water for 30 minutes 2–3 times can effectively remove peculiar smells.	Clean the steam valve or inner lid. Follow the instructions to boil water.
The rice on the bottom is scorched.	The rice has not been cleaned thoroughly. There are foreign objects at the outer bottom of the inner pot.	Clean the rice thoroughly. Remove foreign objects.
The rice dries out or gives off a peculiar smell in the keep warm mode.	The keep-warm time exceeds 12 hours. There are foreign objects at the outer bottom of the inner pot.	The keep-warm time should not exceed 12 hours. Remove foreign objects.
Wi-Fi is unable to connect.	The Mi Home/Xiaomi Home app is not the latest version. Poor Wi-Fi signal around the rice cooker.	Update the Mi Home/Xiaomi Home app to the latest version. Move the rice cooker to a place with strong signal.
Unable to update firmware.	Unable to update the firmware during cooking process. Wi-Fi is not connected.	Update the firmware in the standby mode. Ensure proper Wi-Fi connection.

Note: If the above problems cannot be solved, please contact the after-sales service team.



Hereby, Chunmi Technology (Shanghai) Co., Ltd. declares that the radio equipment type Smart Multifunctional Rice Cooker MFB120A-1 is in compliance with Directive 2014/53/EU. The full text of the EU declaration of conformity is available at the following internet address:
<http://www.mi.com/global/service/support/declaration.html>.
For detailed e-manual, please go to www.mi.com/global/service/userguide.



All products bearing this symbol are waste electrical and electronic equipment (WEEE as in directive 2012/19/EU) which should not be mixed with unsorted household waste. Instead, you should protect human health and the environment by handing over your waste equipment to a designated collection point for the recycling of waste electrical and electronic equipment, appointed by the government or local authorities. Correct disposal and recycling will help prevent potential negative consequences to the environment and human health. Please contact the installer or local authorities for more information about the location as well as terms and conditions of such collection points.

Importer:
Beryko s.r.o.
Pod Vinicemi 931/2, 301 00 Plzeň
www.beryko.cz

Manufactured for: Xiaomi Communications Co., Ltd.
Manufactured by: Chunmi Technology (Shanghai) Co., Ltd.
(a Mi Ecosystem company)
Address: Building 11, 1333 Jiangnan Avenue, Changxing
Science and Technology Park, Lingang, Shanghai, China
Made in China

For further information, please go to www.mi.com

User Manual Version: V1.0